

Commissioning Kits and Software

StoneL Model 464010

AS-Interface Analyzer

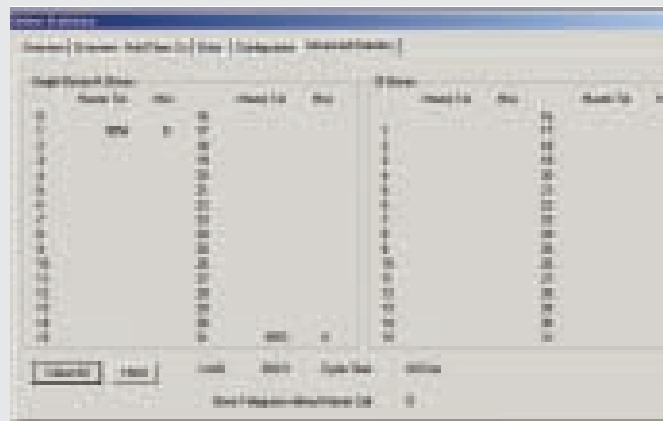
This AS-Interface Analyzer tool allows for Diagnostics and network verification tests. This device can be used to help diagnose network problems and verify network integrity. Works with a Windows PC

Functions

- Statistics mode: Statistical analysis of all telegrams sent on the network. Provides detail
- Data mode: Provides I/O values for each slave for
- Trace Mode: This mode records all network traffic for analysis with a PC

Specifications

Interface	• RS232 Interface with cable
Operating Systems	• Windows 98, Me, 2000, XP, NT4
Type	• Passive AS-i member
Memory	• 256,000 telegrams
Operating current	• 70ma out of AS-i
Indication LED's	• Power On, • RS232 Active • Test Mode
Power Supply	• 30 VDC From AS-i
Software	• AS-i Analyzer
Operating Temp.	• 0° to +55°C (32° to +131°F)



Trace Mode

