

Commissioning kits and software

Model number
AC464010A

AS-Interface analyzer

This AS-Interface analyzer tool allows for diagnostics and network verification tests. This device can be used to help diagnose network problems and verify network integrity. Works with a windows PC.

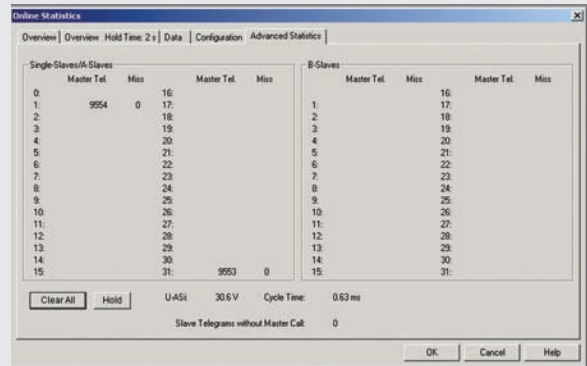
Functions

- Statistics mode: statistical analysis of all telegrams sent on the network.
- Data mode: provides I/O values for each slave.
- Trace mode: this mode records all network traffic for analysis with a PC.



Specifications	
Interface	RS232 interface with cable, USB to Serial converter included
Operating systems	Windows 98, Me, 2000, XP, NT4
Type	Passive AS-i member
Memory	256,000 telegrams
Operating current	70ma out of AS-i
Indication LED's	Power on RS232 active Test mode
Power supply	30VDC from AS-i
Software	AS-i analyzer
Operating temperature	0° to +55°C (32° to +131°F)

Statistics mode



Trace mode

